

Draper's Super Bee Apiaries, Inc.

32 Avonlea Lane
Millerton, PA 16936-9131
Email us: sales@draperbee.com
Phone: 800-233-4273
Fax: 570-537-2727

2019

Purchase online at:

www.draperbee.com

HOURS: Monday - Friday 8:00 to 5:00 Saturday 8:00 to 1:00

***Honey, Pollen, Propolis,
Royal Jelly, Bee Supplies
and much more!***

**We welcome you to tour our
facility. We can accommodate
any size group but we prefer a
call in advance for larger groups.
Shop and browse at your leisure.
We accept cash, Visa, MasterCard,
Discover card, American Express
and personal checks.**



Draper's Super Bee Apiaries, Inc.

2019



THE PLACE WHERE : WHEN YOU CALL, AN ACTUAL PERSON WILL ANSWER THE PHONE.

NO RECORDINGS, NO PRESSING # 2 TO GET SERVICE, BECAUSE

SERVICE AND QUALITY ARE OUR # 1 PRIORITIES !!

WE BACK OUR PRODUCTS 100 %



Although, we cannot be held responsible for improper customer handling or storage. If dissatisfied with any of our products, they must be returned to us, with your request for credit or refund. Partial used products cannot be returned. If the product was purchased at a store, other than Draper's, you must return the product to that store for a refund or exchange. (Note: The store's policy supersedes Draper's policy)

About Shipping Costs

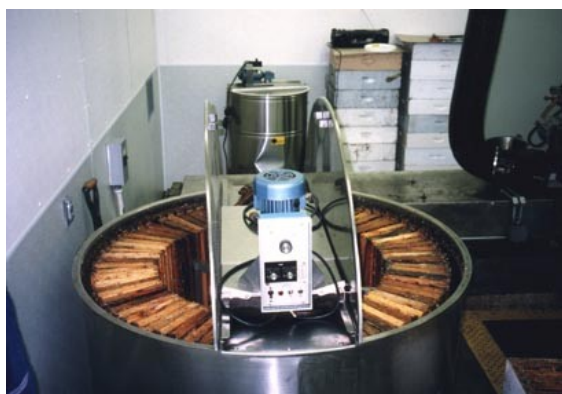
Shipping rates vary depending on distance, weight, insurance claimed, and shipper used. Therefore, we cannot quote shipping costs over the phone on some items. Also, when you receive your shipment, look for the packing slip on the outside of the box. Inside the packing slip you will find a copy of your invoice.

We do our best to maintain our prices at least for a year, but due to ever changing market conditions, prices in this catalog may change at any time.

ABOUT OUR LIQUID HONEY

Honey should be stored at room temperature.

All honey will crystallize but will re-liquefy when gently warmed.



BUSINESS HISTORY

The Draper family has always been self-sufficient. The year was 1974 when Bernie Draper, the father, had a dream of establishing a honey handling and bee supplies business. It all began with one hive and now we are selling honey and honeybee products all over the world!

PRODUCTS AVAILABLE

In stock you will find a wide variety of honey from which to select: Alfalfa, Basswood, Buckwheat, Clover, Goldenrod, Orange Blossom, Tulip Poplar and Wildflower.

Other Items: Beeswax blocks and candles, Maple Syrup, Unsulfured Blackstrap Molasses, Honeystix, Pollen, Propolis, Royal Jelly, Comb honey, Crystallized honey, Honey hard candy, and much more

WE GIVE TOURS

We welcome you to tour our facility. We can accommodate any size group but we prefer a call in advance for larger groups.

Please come shop and browse at your leisure.

We accept cash, Visa, Discover, Mastercard, American Express and checks.

WE THANK YOU!!

Thank you for your patronage !!

Table of Contents

<i>Honey Bee Products</i>					
Beeswax	13	Crystallized Honey	7	Propolis	9,10
Beeswax Sheets	13	Flavored Honey	7	Propolis Tincture	10
Candles	13,14	Honey	5,6,7	Raw Honey	8
Candle Molds	13,14	Honey Silk Creams	10	Royal Jelly	9,10
Candy, Honey Filled	7	Honeystix	7	Shampoo & Conditioner	10
Chunk Honey	5	Maple Syrup	8		
Comb Honey	5	Molasses	8		
		Pollen	9,10		
<i>Bees & Bee Supplies</i>					
Apistan Strips	22	Frame Savers	21	Package Bees	15
Bee Brush	20	Frame Spacers	21	Pail Gates	22
Bee-Go	22	Fumagilin-B	22	Pollen Traps	21
Beginners Kit	29	Fume Pad	22	Queen Bees	15
Books	28	Gloves	19	Rabbets	21
Bottom Board	18	Helmets	19	Sieve	21
Capping Scratcher	21	Hive Tool	20	Skunk Guard	20
Comb Honey Supplies	22,23	Hive Stand	18	Smokers	20
Containers	23	Hive Staples	21	Suits	19
Cut Comb Cutter	17	Honey Robber	22	Support Pins	22
Double Screen	22	Inner Cover	18	Telescoping Cover	18
Eyelets	22	Insecticide Spray	22	Veils	19
Excluders	18	Labels	24	Videos & DVDs (visit our website)	
Extractors	22	Lid Off Tool	23	Wax Moth Crystals	22
Feeders	20,23	Menthol Crystals	22	Woodenware	16,18
Foundation	17	Mouse Guards	20	Uncapping Knives	21
Frame Grip	20	Nails	22		
		Observation Hives	26		

ABOUT “RAW HONEY”

The subject of *raw honey* could be debated forever, however, we at Draper’s Super Bee would like to make the following statement for you, our customers, about our views on this issue.

We feel that the only true *raw honey* comes directly from the hive in the form of comb honey. Any honey you see in a jar has been processed in some way. Honey does not have to have bits of wax and various particles floating in it to be healthy for you. All of our honey is produced in the United States by ourselves and a few very reputable beekeepers that we have known for many years. Our honey is warmed to a low temperature, strained and packed into containers. That’s it! We add nothing to our honey, nor do we take anything away from it. Our honey is not pasteurized! All the nutrients are still in every jar of Draper’s honey. Some sellers of honey print *raw honey* on the label just to sell their product and we feel that that is misleading the consumer. If you are looking for quality honey and bee products, produced and packaged by a company with high standards of handling and packaging, you have picked the right company - Draper’s Super Bee Apiaries.

Thank You for trying our honey and if you ever have any questions, we will always be there for you. Just give us a call.

Cooking with Honey

To substitute honey for sugar in recipes, start by substituting up to half of the sugar called for. With a little experimentation, honey can replace all the sugar in some recipes.

When baking with honey, remember the following:

- ◆ Reduce any liquid called for by 1/4 cup for each cup of honey used.
- ◆ Add 1/2 teaspoon baking soda for each cup of honey used.
- ◆ Reduce oven temperature by 25° F to prevent over-browning.

Because of its high fructose content, honey has a higher sweetening power than sugar. This means you can use less honey than sugar to achieve the desired sweetness.

When measuring honey, keep in mind that one 12-ounce jar of honey equals a standard measuring cup.

When measuring honey, coat the measuring cup with non-stick cooking spray or vegetable oil before adding the honey. The honey will slide right out.

Storing Honey

To retain honey's wonderfully luxuriant texture, always store it at room temperature; never in the refrigerator. If your honey becomes cloudy, don't worry. It's just crystallization, a natural process. Place your honey jar in warm water until the crystals disappear. If you're in a hurry, place it in a microwave-safe container and heat it in the microwave on HIGH for 2-3 minutes, stirring every 30 seconds. Remember, never boil or scorch honey.

Some of these Honeys are seasonal or subject to shortages.

<i>Orange Blossom</i>	<i>Alfalfa</i>	<i>Basswood</i>	<i>Clover</i>	<i>Buckwheat</i>	<i>Goldenrod</i>
	<i>Wildflower</i>			<i>Tulip Poplar</i>	

DEFINITIONS

<i>Alfalfa</i>	Very light honey with a pleasing, mild flavor and aroma.
<i>Basswood</i>	Light honey with a strong flavor.
<i>Buckwheat</i>	Very dark and full-bodied honey.
<i>Clover</i>	Light honey with pleasing, mild taste.
<i>Goldenrod</i>	Locally produced, light honey with distinctive flavor.
<i>Orange Blossom</i>	Light honey with a fresh scent and sweet taste.
<i>Tulip Poplar</i>	Dark in color but has a mild flavor.
<i>Wildflower</i>	Dark honey blended for a mild flavor.
<i>Liquid Honey</i>	Free of visible crystals, the most convenient for use in cooking. Most honey in the U.S. is sold in liquid form.
<i>Crystallized Honey</i>	Creamy, spreadable honey for use on toast, biscuits, muffins, or used as cake filling.
<i>Comb Honey</i>	Honey in the wax cells. You can chew the wax like gum.
<i>Chunk Honey</i>	A piece of comb honey in a jar with liquid honey poured around it.

COMB HONEY



ITEM #	DESCRIPTION	PRICE
CC-002	8 oz. Round Comb Honey *	8.95
CC-001	12 oz. Cut Comb Honey *	Market Price when available
CC-003	14 oz. Section Comb Honey *	Market Price when available

CHUNK HONEY



A piece of comb honey in a jar with liquid honey

ITEM #	DESCRIPTION	PRICE
HC-101	Single jar 1 lb. Chunk Honey*	10.95

Comb honey is nature's perfect unprocessed, unheated, and unadulterated sweet. The fine delicate flavor is unmatched. The wax is tender and very edible. Eating comb honey is like going back into the past; because to our ancestors, this was the only form of honey. Try some comb honey on warm toast or on a biscuit and enjoy honey the way it was meant to be!

* These items are seasonal, we may not have them in stock at all times.

If you do not mind some crystallization in your comb, we always have some on special give us a call for availability and prices.

Draper's 100% U.S.A. Produced Honey

The following prices do not include shipping.

Small Mugs and 8 oz. Glass Jars *	
• Clover, Goldenrod and Wildflower	\$ 4.95
• Alfalfa, Basswood, Buckwheat, Orange Blossom and Tulip Poplar	\$ 5.95
•	\$ 6.95
12 oz. Plastic Bears and 1 lb. Glass Jars *	
• Clover, Goldenrod and Wildflower	\$ 6.95
• Alfalfa, Basswood, Buckwheat, Orange Blossom and Tulip Poplar	\$ 7.95
•	
1 lb. Squeezable Bee - (Alfalfa Only) *	
	\$ 7.95
22 oz. Pint Skep and 22 oz. Pint Bear (Clover Only) *	
	\$ 9.95
2 lb. Glass Jars *	
• Clover, Goldenrod and Wildflower	\$ 10.95
• Alfalfa, Basswood, Buckwheat, Orange Blossom and Tulip Poplar	\$ 11.95
•	
5 lb. Glass Jars *	
• Clover, Goldenrod and Wildflower	\$ 22.95
• Alfalfa, Basswood, Buckwheat, Orange Blossom and Tulip Poplar	\$ 23.95
•	
11½ lb. Gallon Jugs *	
• Clover, Goldenrod and Wildflower	\$ 46.95
• Alfalfa, Basswood, Buckwheat, Crystallized, Orange Blossom and Tulip Poplar	\$ 50.95
•	
60 lb. Round and Square Pails	
• Clover, Goldenrod, and Wildflower	\$ 210.00
• Alfalfa, Basswood, Buckwheat, Orange Blossom and Tulip Poplar	\$ 225.00
•	

*** Case lot prices are available to all customers, call for more information.**

HONEYSTIX

Flavored Honey in a straw.



Flavors available:

Apple, Blueberry, Cherry, Chocolate, Cinnamon, Clover, Grape, Lemon, Mint, Orange, Orange Blossom, Peach, Pink Lemonade, Raspberry, Rootbeer, Strawberry and Watermelon.

ITEM #	DESCRIPTION	PRICE
HS-003	Mix and match flavors	.25 each
HS-006	(200 ct.) Mixed pack of our most popular flavors (Apple, Blueberry, Cherry, Clover, Raspberry and Strawberry)	26.95
HS-004	(160ct.) Refill of all one flavor.	19.95
HS-014	(160ct.) Refill Orange Blossom	26.95
HS-015	(160ct.) Refill Pink Lemonade	26.95

Any way you go, your tastebuds will thank you!

CRYSTALLIZED HONEY



*Creamy, spreadable,
and
delicious honey.
Plain or with natural
flavors added.*

*Plain,
Blueberry or Raspberry*

ITEM #	DESCRIPTION	PRICE
CH-101	1 lb Jar plain crystallized honey	7.95
FC-001	1 lb Jar flavored crystallized honey	8.95
CH-201	2 ½ lb Jar <i>plain only</i> crystallized honey	20.95
HG-003	Gallon <i>plain only</i> crystallized honey	50.95
<i>Please indicate the flavor you want when ordering.</i>		

HONEY SALTED WATER TAFFY



ITEM #	DESCRIPTION	PRICE
CA-008	Taffy– 1lb. Plastic bag	3.75
CA-010	Taffy– 5lb. Plastic bag	17.95

HONEY FILLED HARD CANDIES

Honey Filled Hard Candies
Individually wrapped
Apple, Double Honey, Grape,
Lemon, Orange, and Strawberry.
Sold in 1 lb. or 5 lb. bags.
Individual or mixed flavors.

ITEM #	DESCRIPTION	PRICE
CA-001	1 lb. bag	5.95
CA-003	5 lb. bag	17.95



PURE NORTH CAROLINA SOURWOOD HONEY



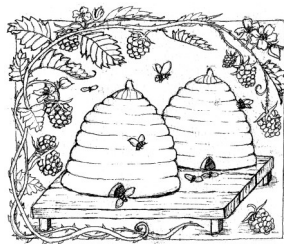
*Very Unique Honey from the
Mountains of North Carolina.*

ITEM #	DESCRIPTION	PRICE
SO-001	Pint Jar Sourwood	Market price
SO-004	Quart Jar Sourwood	When available

PURE LOCAL MAPLE SYRUP



ITEM #	DESCRIPTION	PRICE
MS-005	1/2 Pint Maple Syrup (8 oz.)	7.95
MS-007	Pint Maple Syrup (16 oz.)	13.95
MS-009	Quart Maple Syrup (32 oz.)	19.95
MS-011	Gallon Maple Syrup (128 oz.)	55.00
MS-015	5.5 Gallon Maple Syrup	265.00



UNFILTERED, UNHEATED, UNSTRAINED HONEY



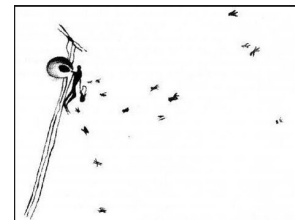
This honey has never be heated or filtered and is as close to "raw" honey as you can get. The color and texture will vary from batch to batch.

ITEM #	DESCRIPTION	PRICE
H1R-001	1 lb. Jar	7.95
H2R-001	2 lb. Jar	11.95
H5R-001	5 lb. Jar	23.95

PURE UNSULFURED MOLASSES



ITEM #	DESCRIPTION	PRICE
MO-001	Pint jar Blackstrap Molasses	3.50
MO-004	Quart jar Blackstrap Molasses	5.50
MO-007	Gallons Blackstrap Molasses	15.95
MO-010	5 Gallon pail Blackstrap Molasses	42.95



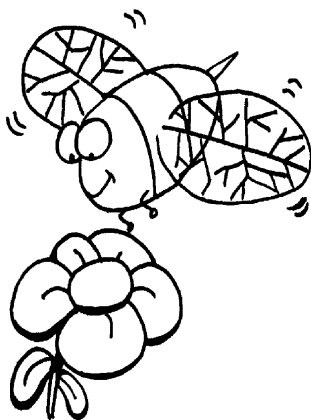
BEE POLLEN



ITEM #	DESCRIPTION	PRICE
<i>Bee Pollen Loose Granular</i>		
BP-007	4 oz. Jar	5.95
BP-008	1 lb. Jar	14.95
BP-009	5 lbs. Gallon	61.95
BP-010	5 Gallon Pail	350.00
<i>Bee Pollen Whole Grain Capsules</i>		
BP-004	500 mg. 100 ct.	15.95

Bee pollen contains much more protein per ounce than any other natural food. It is used to reduce stress, to increase alertness and stamina, reduce cholesterol, alleviate depression and fatigue, and can help reduce the effects of pollen allergies. Pollen is rich in vitamins, especially B12 & E, and is a good source of amino acids and enzymes.

For more information on these products see pages 11 & 12.



PROPOLIS



ITEM #	DESCRIPTION	PRICE
<i>Select Propolis Chunks</i>		
PR-008	1 lb. (packaged in plastic)	39.95
<i>Refined Propolis 3 oz.</i>		
PR-007	Refined Propolis (Ingredients: 70% PROPOLIS (Ethanol Extracted), 30% MALTODEXTRIN)	21.95
<i>Powdered Propolis</i>		
PR-022	6 oz. Propolis with Carob powder	12.95
<i>Propolis Capsules</i>		
PR-004	500 mg. 100 ct. Capsules	15.95
PR-001	500 mg. 100 ct. Chewable Tablets	15.95
PR-019	500 mg. 100 ct. PropolPom Capsules (Propolis & Pomegranate)	19.95

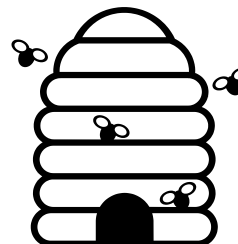
Propolis is considered a very effective antibiotic. It is also believed to increase the effectiveness of other antibiotics. Propolis is also credited with antifungal, antiviral, analgesic, and anti-oxidizing properties. Propolis is a rich source of Flavenoids, and Amino Acids.

ROYAL JELLY

<i>Pure Frozen Royal Jelly</i>		
RJ-007	1 oz. (28,350 mg.)	9.95
RJ-008	6 oz. (170,100 mg.)	31.00
RJ-009	1/2 kilo (500,000 mg.)	55.00
RJ-010	1 kilo (1 million mg.)	79.00
RJ-001	500 mg. 100 ct. capsules	18.25
RJ-011	1000 mg. 100 ct. capsules	29.45

Royal Jelly contains 17 amino acids. It also contains all the B complex vitamins, and is rich in minerals, vitamins, and enzymes. "Royal Jelly is said to be especially effective in halting or controlling the aging process."

SUPPLEMENTS & BODY CARE PRODUCTS



BODY CARE PRODUCTS	ITEM #	Wholesale (6 or more)	ITEM #	RETAIL
Therapeutic Derma Cream (2-oz.)	BB-006	7.95	BB-004	10.95
Honey Silk Facial Cleanser W/Propolis (8 oz.)	BB-036	6.80	BB-034	8.95
Honey Silk Hydrating Cream W/Royal Jelly (2.0 oz.)	BB-009	6.30	BB-007	8.50
Honey Silk Night Cream W/Royal Jelly (2 oz.)	BB-033	7.30	BB-031	9.95
Honey Silk Body Moisturizer W/Honey & Pollen (8-oz.)	BB-012	7.30	BB-010	9.95
Propol Guard Beeswax Lip Balm	BB-015	2.50	BB-013	2.95
Propolis & Herb Throat Spray (1 oz.)	BB-030	6.75	BB-028	9.50
Shampoo or Conditioner W/Pollen,Honey,Comfrey and Vitamin E				
8 oz. Shampoo or Conditioner	BB-021	6.95	BB-019	8.50
16 oz. Shampoo or Conditioner	BB-024	12.60	BB-022	13.95
SUPPLEMENTS				
Bee Pollen - Whole Grain (100ct.) [500mg.]	BP-006	12.00	BP-004	15.95
Propolis Chewable Tablets (100ct.) [500mg.]	PR-003	12.00	PR-001	15.95
Propolis Capsules (100ct.) [500mg.]	PR-006	11.95	PR-004	15.95
PropolPom Capsules (100 ct) [500 mg.] (Propolis & Pomegranate)	PR-021	14.00	PR-019	19.95
Royal Jelly Capsules (100ct.) [500mg.]	RJ-003	12.95	RJ-001	18.25
Royal Jelly Capsules (100ct.) [1000mg.]	RJ-013	19.95	RJ-011	29.45
SPECIALTY ITEMS				
Propolis Tincture (25% in 1-oz. bottle)	PR-011	9.35	PR-009	13.95
Propolis Tincture (50% in 1-oz. bottle)	PR-014	11.95	PR-012	14.95
Propolis Tincture (65% in 1-oz. bottle)	PR-017	14.30	PR-015	17.95

Bee Pollen, Propolis & Royal Jelly

Bee Pollen*

Bees - Legends and Lore

The oldest remains of bees known to exist are preserved in a small bit of amber kept at the American Museum of Natural History in New York. The bee inside is believed to be over 80 million years old.

Throughout the ages the bee has been revered by man. The Bible, the Talmud, the Torah, the Koran (the code of Islam), along with the scrolls of the Orient, the writings of Ancient Greece and Rome, the legends of the Russian and Slavic people, even the relatively recent Book of Mormon (1830), all praise the industrious and healing foods created by her and found in her beehive. In the Bible alone, the bee's nectar is mentioned 68 times.

Traveling back in time, we find the honeybee was revered, even deified in many religious cultures. The book of the Hindu's, the Rig-Veda, penned in Sanskrit between 2000 and 3000 BC, talks of bees almost with awe. Vishnu, the powerful Preserver and Protector of the Hindu trinity of gods, is often symbolized as a blue bee on a lotus flower. The east Indian god of love, Kama, wields a bow with a string made of an entwined chain of bees. In cultures worshipping a goddess of fertility, variously named Venus, Diana, Ceres, Cybele, or Iris, bees were invariably considered sacred and were minor deities in their own right. Spring fertility rites often used the bee as a symbol for the festivities. No other living creature, other than man, has been held in such high regard by so many diverse cultures.

Components Of Bee Pollen

Pollen itself is the male seed of flowers, required to fertilize the plant. Every single flower in the world puts forth a dusting of pollen, as do many orchard fruits and agricultural crops. Bees are responsible for the pollination of more than 80 percent of the earth's foliage.

Bee Pollen is abundant with vitamins, minerals, amino acids and more. It contains all the essential components of life, and is rich in rare and precious compounds which work in a deep and lasting fashion. Some of the chief vitamins found in bee pollen are:

Thiamine (vitamin B1) - Indicated for the treatment of the toxic effects of alcohol and certain medicines, the curing the edemas, the treatment of shingles, and heart conditions myocarditis and tachycardia, and in regimen for diabetes.

Riboflavin (vitamin B2) - In ophthalmology, necessary to cure conjunctivitis, disorders of retinal adaption, some skin diseases and alleviate migraines.

Pyridoxine (vitamin B6) - Required for the formation of hemoglobin and used to combat nervousness, fatigue, muscular weakness, brain tumors, anemia, Parkinson's disease, arteriosclerosis of the brain, and radiation sickness.

Nicotinic Acid (Nicotinamide) - Acts on the formation of blood, is used in the treatment of toxic overload, diabetes mellitus, gastrointestinal problems, asthma, neuralgia, fights migraine and tinnitus, and lower cholesterol.

Pantothenic Acid (Part of B-complex) - Effectively speeds the cure of wounds, gangrene, various ulcers, herpes, bedsores, inflammatory infections of the mouth, colds, bronchitis, infectious hepatitis and minor skin problems.

Ascorbic Acid (vitamin C) - Stimulating antitoxic effects. Beneficial against colds, respiratory distress, and is useful in metabolizing calcium.

Retinol (vitamin A) - Effective against infections, dry eyes, and nightblindness.

Tocopherol (vitamin E) - Assists oxygenation of the cellular level and fights sterility. Has anticoagulant properties and improves blood circulation.

Benefits Of Bee Pollen

Vitamins and minerals are not all that bee pollen offers. It is also rich in proteins, free amino acids, hormones and trace elements.

No other food on earth offers such a broad spectrum of nutrition so naturally.

All over the world honeybee pollen is recognized not only as an ideal food source, but as a food source with wide-acting medicinal properties, including:

1. Restore lost sexual desire and energy.
2. Alleviate menstrual cramps.
3. Speed the healing of wounds.
4. Alleviate depression and fatigue.
5. Normalize digestive problems.
6. Alleviate migraine headaches.
7. Relieve various prostate problems.
8. Improve fertility in females and males.
9. Reduce cholesterol.
10. Greatly improve energy levels.

Modern researchers today are proving what our ancestors already knew yesterday; that eating bee pollen every day will keep many maladies at bay.

*The above information should not be seen as a claim for any remedial properties, it is entirely based on experience of bee pollen users, therefore it is advisable to consult your physician or homeopath regarding treatment.

Propolis*

What is Propolis?

Propolis is a sticky resin that seeps from the buds of some trees and oozes from the bark of other trees, chiefly conifers.

The bees gather propolis, sometimes called bee glue, and carry it home in their pollen baskets. They blend it with wax flakes secreted from special glands on their abdomens.

Propolis is used to line the interior of brood cells in preparation for the queen's laying of eggs, a most important procedure. With its antiseptic properties, this propolis lining insures a hospital-clean environment for the rearing of brood.

The Constituents of Propolis

Chemically speaking, propolis is a very complex mixture. Its chemical elements vary according to its source. Colors range from golden brown to brownish green to reddish brown to blackish brown. A broad analysis reveals approximately 55 percent resinous compounds and balsam, 30 percent beeswax, 10 percent ethereal and aromatic oils, and 5 percent bee pollen. Many flavonols contribute to propolis. Other components include cinnamic acid, cinnamyl alcohol, vanillin, caffeic acid, tetrochrysin, isalpinin, pinocembrin, chrysin, galangin, and ferulic acid.

The Properties of Propolis

Propolis is another medicinal marvel from the beehive. Research shows it offers antiseptic, antibiotic, antibacterial, antifungal, and even antiviral properties. Propolis is Nature's premiere preventive. It is so powerful in action, it is often called Russian penicillin in acknowledgement of the extensive research the Russians have mounted on this wonder worker from the bees. Propolis demonstrates strong antimicrobial properties against various bacterial and fungal infestations. Even streptococcus bacteria have been shown sensitive to propolis.

Natures' Preventive Medicine

Propolis has been justly called Nature's premier preventive. The immune system is supported and strengthened by the ingestion of propolis. Modern scientific studies indicate that those who take propolis regularly escape winter colds and sore throats and seem to develop a natural immunity to common viruses, including the various strains of flu.

Chemical antibiotics destroy *all* bacteria in the body, both the friendly, (necessary flora required for healthy functioning in the entire gastrointestinal tract) and the bad intestinal flora. An individual who constantly takes prescribed antibiotics for one condition after another soon learns to his sorrow that the drugs may no longer work as well as they once did. As invading bacteria get "smarter," the drugs become less and less effective.

Propolis, the natural antibiotic, works against harmful bacteria without destroying the friendly bacteria the body needs. Propolis has also been proven effective against strains of bacteria that resist chemical antibiotics.

The field of influence of propolis is extremely broad. It includes cancer, infection of the urinary tract, swelling of the throat, gout, open wounds, sinus congestion, colds, influenza, bronchitis, gastritis, diseases of the ears, periodontal disease, intestinal infections, ulcers, eczema eruptions, pneumonia, arthritis, lung disease, stomach virus, headaches, Parkinson's disease, bile infections, sclerosis, circulation deficiencies, warts, conjunctivitis, and hoarseness.

Propolis helps regulate hormones and is an antibiotic substance that stimulates the natural resistance of the body. Propolis may be used by everyone, sick or healthy, as a means of protection against microorganisms. Propolis is also efficient against conditions caused by bacteria, viruses, or different fungi. Propolis cures many diseases because it is a special natural substance with strong effect.

Use it as part of your daily program of supplementation. It has helped the bee society survive and thrive for over 45 million years. It may well help you survive ... for a long time!

Royal Jelly*

Royal Jelly is a substance of complex chemical structure produced by the young nurse bees as larva food. Although it is not quite as well known as bee pollen, royal jelly equals pollen in its salutary effects.

The young nurse bees make royal jelly by blending pollen and honey with a special nectar they secrete from glands on the tops of their heads. For 2-3 days, royal jelly is the only food given to all young larvae in their maturation process, while for the queen larvae, it is the specific food for her whole life period. During the 3 days in which the worker bee larvae are fed on royal jelly, they reach the maximum development; their weight multiplies about 250 times. The queen (fed only on royal jelly for her entire life) reaches maturity 5 days earlier than the worker bees; and, when she is fully grown, her weight is double that of the working bee. The span of the worker bee's life is about 35-40 days; while the queen lives 5-6 years and is extremely prolific. She is fertilized once, and from that moment on can lay as many as three thousand eggs a day during the season. As incredible as this may seem, she can lay that many eggs for five years. Any creature that has that amount of energy and vitality has to be respected!

This rich concentrated food is not just useful for the bees. It contains remarkable amounts of proteins, lipids, glucides, vitamins, hormones, enzymes, mineral substances, and specific vital factors that act as biocatalysts in cell regeneration processes within the human body.

Although some of the elements found in royal jelly are in microgram quantities, they still can act supremely with co-enzymes as catalysts or can act synergistically. (That is, the elements' action combined is greater than the sum of their actions taken separately.) Royal jelly is rich in protein, vitamins B-1, B-2, B-6, C, E, niacin, pantothenic acid, biotin, inositol and folic acid. In fact, it contains seventeen times as much pantothenic acid as that found in dry pollen.

HEALING AND REJUVENATION PROPERTIES OF ROYAL JELLY

Apiculture — the study of bees and their products is no longer relegated to the status of folk medicine. Since both beekeeping and harvesting of products are carried out under technically advanced conditions, apitherapy has reached the stage of scientific medicine. The general interest in bee products for the treatment and prevention of various ailments on the part of medical practitioners and laymen alike attests to the validity of bee products as health aids.

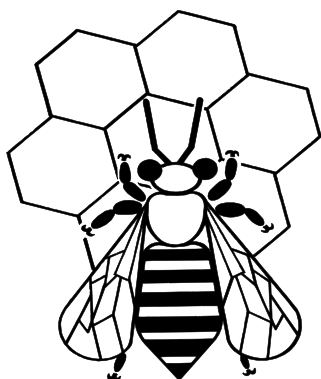
Studies indicate the effectiveness of royal jelly for the following:

- for tiredness and overwork, asthenia, anxiety states, insomnia and anorexia, bronchial asthma, liver diseases (hepatitis), pancreatitis, general exhaustion diseases, arthritis, gout, atherosclerosis, kidney diseases, stomach ulcers, ovarian insufficiency, reversing the aging process, stimulating and regenerating the nervous system, for accelerating the healing and consolidation of fractured bones, skin disorders, promotes sexual rejuvenation.

Since its action seems to be more systemic rather than one which affects a specific biological function, royal jelly has been highly recommended for a large variety of purposes.

Nearly all the scientific investigators have agreed upon at least two things:

1. More laboratory and clinical studies are needed and should be made until the whole story of royal jelly is known; and,
2. Nonetheless, royal jelly is a valuable addition to everyone's diet.



PURE BEESWAX



Beeswax is the oldest and purest wax in the world. There are no artificial ingredients. Beeswax has been used in hundreds of products, including : candles, cosmetics, soap, potpourri, adhesives, lubricants, fly paper, furniture polish, and paint removers. It also has many uses, like : Easter Egg decorating, sculpting, lubricating of thread and nails, waxing bowstrings, coating on waffle irons, and many, many other craft uses. The melting point of beeswax is 142 degrees. Care of beewax products is very simple occasionally buff with a soft cloth or warm with a blow dryer to return original luster and honey scent, insuring many years of enjoyment.

ITEM #	DESCRIPTION	PRICE
BW-001	Small blocks Beeswax (approx. wt. 1 oz.)	1.05
BW-002	Hex blocks Beeswax (approx. wt. 2 oz.)	1.45
BW-003	Medium blocks Beeswax (approx. wt. 8 oz.)	4.65
BW-004	Large blocks Beeswax (approx. wt. 1 lb.)	7.50
BW-005	Large blocks Beeswax (50 lbs. or more) per pound	7.30
BW-006	Unprocessed Beeswax (less than 50 lbs.) per pound	6.15
BW-007	Unprocessed Beeswax (50 lbs. or more) per pound	5.95
BW-008	Pair 10 inch tapered Beeswax hex candles	9.95
Beeswax sheets for makings rolled candles		
PM-001 thru PM-014	<i>Colors Available:</i> Burgundy (PM-001), Navy (PM-002), French Blue (PM-004), Green (PM-006), Flame (PM-007), Forest Green (PM-008), Red (PM-010), Yellow (PM-011), Egg Plant (PM-012), Brown (PM-013), Natural (PM-014),	2.75

Beeswax Molds and Accessories		
ITEM #	DESCRIPTION	PRICE
BW-053	10.5" 2-tube metal candle mold	41.95
BW-010	10.5" 4-tube metal candle mold	43.95
BW-011	10.5" 6-tube metal candle mold	48.95
BW-012	10.5" 8-tube metal candle mold	57.95
PM-320	Poly. Votive mold ([4] - 1.25" x 1.25")	30.95
PM-782	Poly. Flat Votive mold ([4] - 2" x 1.75")	36.95
PM-890	Poly. Honeybee Mold (3.5" x 3" x 1.5")	28.95
PM-344	Poly. Cylinder with Bees mold (3" x 3")	22.95
PM-500	Poly. Cylinder mold (3" x 3")	32.95
PM-502	Poly. Cylinder mold (3" x 5")	34.95
PM-395	Poly. 8" Tapered round candle mold	22.95
PM-390	Poly. 10" Tapered round candle mold	32.95
PM-335	Poly. 10" Octagon candle mold	32.95
PM-340	Poly. 10.5" Colonial candle mold	32.95
PM-285	Poly. Carved Egg mold (4.25" x 3")	31.95
PM-155	Poly. Santa Claus mold (5" x 1.5" x 1.5")	28.95
PM-165	Poly. Victorian Santa mold (6.5" x 2" x 1.5")	47.95
PM-410	Poly. Snowman with Bell mold (2.5" x 2")	23.95
PM-412	Poly. Snowman with Gift box mold (2.5" x 2")	23.95
PM-413	Poly. Snowman with Wreath mold (2.5" x 2")	23.95
PM-300	Poly. Christmas Tree mold (4")	28.95
PM-301	Poly. Christmas Tree mold (5.25")	37.95

CANDLE MOLDS

Beeswax Molds and Accessories		
ITEM #	DESCRIPTION	PRICE
PM-215	Poly. Cow mold (4.25" x 2.5")	26.95
PM-220	Poly. Donkey mold (2.75" x 4" x 1.5")	29.95
PM-230	Poly. Lamb mold (1.75" x 2.5" x 1")	23.95
PM-235	Poly. Angel mold (4"x 3.25"x 2")	36.95
PM-201	Poly. Praying Angel mold (2.75" x 2")	25.95
PM-270	Poly. Bear with Skep mold (2.5" x 2")	20.95
PM-739	Poly. Bee Hive Skep mold (1.5" x 1.5")	22.95
PM-275	Poly. Bee Hive Skep mold (3" x 2.25")	24.95
PM-767	Poly. Bee Hive Skep mold (4" x 3")	33.95
PM-803	Poly. Bee Hive Skep Votive (set of 3) (2" x 1.75")	45.95
PM-185	Poly. Pine Cone mold (3.75" x 1.75")	25.95
PM-763	Poly. Pine Cone mold (2" x 2")	25.95
PM-774	Poly. Light House mold (3.75" x 2")	26.95
PM-761	Poly. Floating Sunflower with Bee (2" x 1.5")	22.95
PM-343	Poly. Frog mold	23.95
PM-870	Poly. Honey Bear (2 1/4" x 6 1/2")	49.95
PM-021	Silicone Small Honeycomb Cylinder w/Bees Mold	50.95
PM-022	Silicone Bear w/Honey Pot Mold	61.95
TI-081	8 oz. Bottle Beeswax Furniture Polish	4.95

Beeswax Molds and Accessories		
ITEM #	DESCRIPTION	PRICE
PM-186	Poly. Pumpkin mold (2" x 2")	23.95
PM-180	Poly. Spruce Tree (3.5" x 2.75")	28.95
PM-181	Poly. Spruce Tree (4" x 3.5")	30.95
BW-028	Wicking 2/0 30' roll (for smaller candles)	4.95
BW-026	Wicking 2/0 250' roll (for smaller candles)	9.95
BW-029	Wicking 60 ply 30' roll (for larger candles)	4.95
BW-027	Wicking 60 ply 250' roll (for larger candles)	14.95
BW-047	Medium Wire-Core Wicking (8 oz - 390' roll)	14.95
BW-055	Wick Holder Tabs (50 ct.)	3.95
BW-024	Base Shaper for tapered candles	69.95
BW-025	Candle Luster Spray for high gloss finish on Beeswax	16.95
BW-046	Mold Release Spray	11.95
BW-051	Glass Votive Inserts	2.95

Beeswax Lanterns

The following handmade beeswax creations have various real dried flowers pressed into the wax. Each is an artist original. The lanterns are reusable, you only need to replace the candle inside. Visit our website for more information. The tapered candles are hand dipped with your choice of three different flower patterns.

ITEM #	DESCRIPTION	PRICE
BW-039	Large Beeswax Lantern	48.95
BW-037	Medium Beeswax Lantern	39.95
BW-041	10" Tapered Candle Green	9.95
BW-042	10" Tapered Candle Blue	9.95
BW-043	10" Tapered Candle Red	9.95

2019 Queens and Package Bees

Queens	Item #	Picked up	We can ship queens almost anywhere. Shipping costs depend on shipping service used. Not all types of Queens are available at all times.	
Italian	BEE-01	\$ 35.95		
Carniolan	BEE-19	\$ 35.95		
We can clip and mark queens for \$ 8.00 each. There are many shipping options depending on your location and how many queens you order. Generally, we prefer U.P.S. shipping. If you would like us to use Express Mail or a Air Service, just mention it when you place your order.				
Package Bees	Item #	Picked up at Draper's	Item #	Shipped
Italian 3 lbs.	BEE-06	\$ 130.00	BEE-07	\$ 170.00
Italian 3 lbs. (25+)	BEE-18	\$ 128.00		Not Available
Buckfast 3 lbs.	BEE-39	Shipped via UPS Next Day Air	BEE-40	\$ 260.00
All American 3 lbs.	BEE-51	Shipped via UPS Next Day Air	BEE-52	\$ 260.00
Nucs & Complete Hives	Item #	Picked up at Draper's		
5 frame nucs**	BEE-08	Not Available		
1 story hive complete**	BEE-09	Not Available		
2 story hive complete**	BEE-10	Not Available		
** 5 frame nucs, and complete hives available in early May. Prices may change at any time. We accept cash, check, money orders, American Express, MasterCard, Visa or Discover cards. There will be a service fee of \$ 20.00 on all returned checks, on any order cancelations or changes.				

All American and Buckfast packages are only shipped via UPS Next Day Air, which is included in the price listed. Most Italian packages are shipped via USPS Priority Mail.

To all shipped package bee customers,

When you order package bees from Draper's we will do our best to inform you of ship dates and any information concerning your order. Because of zone restrictions (distance from shipper), some packages may be subject to other charges such as next day air. These charges cannot be absorbed by Drapers and will be charged to the customer. This is good for the customer because bees shipped great distances will be in transit less time. Your bees may or may not ship from our location here in Pennsylvania. We use many different package bee producers to meet orders and we have some packages shipped directly to you from the producer that is closest to your area to shorten shipping time and stress on your bees. Because of this, we may not know exact ship days on all orders and this also hinders are ability to make changes to orders. Bees are not items that are stocked in a warehouse and ship days are effected by weather, the postal service and many other factors. It is your responsibility to make arrangements to pick up your bees at the post office. If you are going to out of town or not available to pick up your bees, you will need to make arrangements with someone to pick them up for you. We are not responsible if you do not pick up your bees when they arrive at the post office and they die. Spring is the busiest time of year for us and we thank you for your patience. Prices listed may change at any time.

Thank you and have a great bee year!

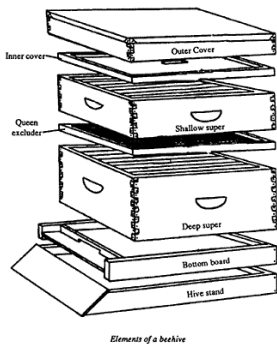
Woodenware

Commercial

These hive bodies, supers and frames are hand sorted to ensure that only tight knots are present and that they are away from the nailing joints.

Budget

Our Budget hive bodies, supers and frames are unsorted and may have larger knots and some milling defects however, this is the grade we use and it is completely serviceable.



Here is a brief description of what parts fit together:

9 5/8" hive body will need 10 - 9 1/8" frames and 10 - sheets 8 1/2" foundation.
 6 5/8" super will need 10 - 6 1/4" frames and 10 sheets 5 5/8" foundation.
 5 11/16" super will need 10 - 5 3/8" frames and 10 - sheets 4 3/4" foundation.

Budget Woodenware		
ITEM #	DESCRIPTION	PRICE
BS-001	1 Budget 9 5/8" Hive Body	16.95
BS-101	10 Budget 9 5/8" Hive Bodies	159.50
BS-002	10 Budget 9 1/8" Frames	12.95
BS-102	100 Budget 9 1/8" Frames	119.95
BS-003	1 Budget 6 5/8" Super	13.95
BS-103	10 Budget 6 5/8" Supers	129.50
BS-004	10 Budget 6 1/4" Frames	12.95
BS-104	100 Budget 6 1/4" Frames	119.95
BS-338	Hive Extender (winter or spring feeding)	4.95
NUC-01	5 Frame Nuc Box Complete	21.95

Commercial Woodenware		
ITEM #	DESCRIPTION	PRICE
BS-007	1 Comm. 9 5/8" Hive Body	18.95
BS-107	10 Comm. 9 5/8" Hive Bodies	179.50
BS-008	10 Comm. 9 1/8" Frames	14.95
BS-108	100 Comm. 9 1/8" Frames	139.95
BS-009	1 Comm. 6 5/8" Super	15.95
BS-109	10 Comm. 6 5/8" Supers	149.50
BS-010	10 Comm. 6 1/4" Frames	14.95
BS-110	100 Comm. 6 1/4" Frames	139.95
BS-011	1 Comm. 5 11/16" Super	15.95
BS-111	10 Comm. 5 11/16" Supers	149.50
BS-012	10 Comm. 5 3/8" Frames	14.95
BS-112	100 Comm. 5 3/8" Frames	139.95

Plastic Frames & Foundation



Solid Plastic Frames

No more broken ears, this frame is 5 times more rigid than standard plastic frames because of the patent pending metal reinforced ears.

These one piece plastic frames are wax coated and ready for use.

ITEM #	DESCRIPTION	PRICE
BS-319	6 1/4" Solid Plastic Frame	2.95
BS-318	9 1/8" Solid Plastic Frame	3.25

Foundation

Plain foundation is pure beeswax and can be used in the brood chamber as is, but will require additional wiring if to be used for extracting honey.

Crimp Wired foundation is pure beeswax with vertical wires embedded in it, but it is recommended that you embed horizontal wires for the most strength.

Duragilt foundation has a plastic core with pure beeswax on both sides and metal supports on both ends, and requires no wiring or pinning, for use in the brood chamber or for honey extracting.

Waxed Plastic foundation provides a deeper cell and higher definition that encourages bees to work faster and requires no wiring or pinning which saves time and money. The 8 1/2" plastic foundations are available in black or white. The 5 5/8" plastic foundations is only available in white.

Foundation for use in Comb Honey production is also available - see below.

Foundation (Crimp Wired, Duragilt and Plain)		
ITEM #	DESCRIPTION	PRICE
BS-013	8 1/2" per sheet	1.75
BS-301	8 1/2" Waxed Plastic (each)	1.95
BS-301c	8 1/2" Waxed Plastic (100ct box)	165.00
BS-014	8 1/2" 12 1/2 lb. box	135.00
BS-015	8 1/2" 25 lb. box	225.00
BS-016	5 5/8" per sheet	1.75
BS-302	5 5/8" Waxed Plastic (each)	1.65
BS-302c	5 5/8" Waxed Plastic (100ct box)	145.00
BS-017	5 5/8" 12 1/2 lb. box	135.00
BS-018	5 5/8" 25 lb. box	225.00
BS-019	4 3/4" per sheet	1.75
BS-141	4 3/4" Waxed Plastic (each)	1.65
BS-141c	4 3/4" Waxed Plastic (100ct box)	145.00
BS-020	4 3/4" Crimp Wired 12 1/2 lb. box	135.00

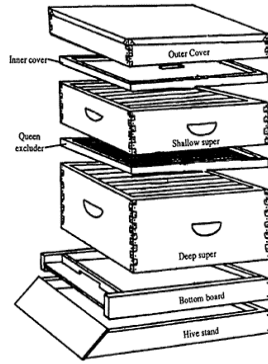
Foundation (Crimp Wired, Duragilt and Plain)		
ITEM #	DESCRIPTION	PRICE
BS-137	4 3/4" Duragilt 15 lb. box	150.00
BS-138	4 3/4" Duragilt 30 lb. box	245.00
BS-021	4 3/4" 25 lb. box (C.W. & Plain)	225.00
BS-022	4 1/8" Cut Comb 1 lb. box	11.95
BS-023	4 1/8" Cut Comb 5 lb. box	49.95
BS-024	4 1/8" Cut Comb 25 lb. box	235.00
BS-025	4 3/4" Cut Comb 1 lb. box	11.95
BS-026	4 3/4" Cut Comb 5 lb. box	49.95
BS-027	4 3/4" Cut Comb 25 lb. box	235.00
BS-028	5 5/8" Cut Comb 1 lb. box	11.95
BS-029	5 5/8" Cut Comb 5 lb. box	49.95
BS-030	5 5/8" Cut Comb 25 lb. box	235.00
BS-320	Cut Comb Honey Cutter	17.95

Feel free to email us with any of your beekeeping questions - sales@draperbee.com

Bee Supplies

WE WILL ACCEPT YOUR PRODUCTS IN TRADE FOR SUPPLIES

Ultimate Hive Stand



Elements of a beehive



Telescoping Cover

Heavy duty cover with galvanized top. We suggest using a inner cover with a telescoping cover.

BS-344	Ultimate Hive Stand (with frame holder) Woodenware Not Included	79.95
--------	--	-------

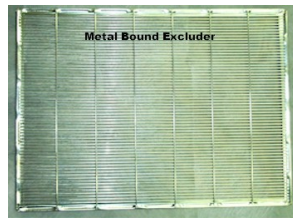
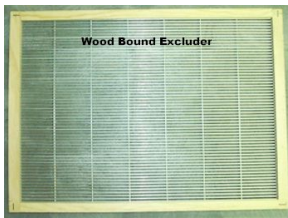
BS-034	Telescoping Cover	28.95
BS-134	Telescoping Covers (5 or more) each	27.95



BS-346	Screened Bottom Board	31.95
--------	-----------------------	-------



BS-033	Inner Cover	11.95
--------	-------------	-------



BS-031	Wood Bound Excluder	18.95
BS-032	Metal Bound Excluder	9.95



Durable double-wall construction, keeps the hive warmer in winter and cooler in the summer.

BS-343	Ultimate Hive Cover (plastic)	26.95
--------	-------------------------------	-------



Cedar Reversible Bottom Board

3/4" entrance shown for summer use, flip it over for a 3/8" entrance for winter. Comes with an entrance reducer.



Hive Stand

To be placed under your bottom board to provide a landing area for the bees.

BS-035	Cedar Reversible Bottom Board	21.95
--------	-------------------------------	-------

BS-060	Cedar Hive Stand	17.95
--------	------------------	-------

Feel free to call us on our toll free number with any of your beekeeping questions - 800.233.4273

Bee Supplies

WE WILL ACCEPT YOUR PRODUCTS IN TRADE FOR SUPPLIES



Our full length plain coveralls are made of 65% polyester 35% cotton and are preshrunk. They are available in regular or long.

BS-036 thru BS-038



Our full length zipper veil coveralls are made of 65% polyester 35% cotton and are preshrunk. They are available in regular or long. They come with a veil that zips all the way around, providing excellent protection from marauding bees.

BS-039 thru BS-040



Our half length zipper veil suits are made of 100% cotton with elastic at the waist and wrists. The veil has a large viewing area and is held in place with zippers and Velcro.

BS-310



Our full length zipper veil suits are made of 100% cotton with elastic at the waist and ankles. The veil has a large viewing area and is held in place with zippers and Velcro.

BS-340

ITEM #	DESCRIPTION	PRICE
BS-036	Plain Coveralls (sizes 38-46)	34.95
BS-037	Plain Coveralls (sizes 48-50)	34.95
BS-038	Plain Coveralls (sizes 52-58)	70.95
BS-341	Plain Coveralls (sizes 60-66)	88.00
BS-039	Zipper Veil Coveralls (sizes 38-46)	76.95
BS-040	Zipper Veil Coveralls (sizes 48-50)	76.95
BS-041	Zipper Veil Coveralls (sizes 52-58)	102.95

ITEM #	DESCRIPTION	PRICE
BS-041	Zipper Veil Coveralls (sizes 60-66)	115.00
BS-310	Half Suit with Zipper Veil (L-5XL)	125.00
BS-340	Full Suit with Zipper Veil (L-4XL)	174.95
BS-335	Zipper Bee Jacket Round veil (XL-3XL)	39.95
BS-336	Zipper Bee Jacket European veil (XL-3XL)	39.95
BS-336f	Zipper Bee Full Suit European veil (L-4XL)	49.95



Plastic Helmet



Straw Helmet



Hat-Veil Combo



Wire Folding Veil



Ventilated Leather Gloves



Canvas Gloves



Plastic Coated Gloves



ITEM #	DESCRIPTION	PRICE
BS-042	Plastic Helmet	13.95
BS-043	Straw Helmet	20.95
BS-113	Hat -Veil Combo	18.95
BS-044	Wire Folding Veil	23.95
BS-045	Top Quality Ventilated Leather	29.95

ITEM #	DESCRIPTION	PRICE
BS-049	Bee Sleeves	8.95
BS-314	Padded Leather Gloves	30.95
BS-047	Canvas Gloves	16.95
BS-046	Plastic Coated Gloves	17.95
BS-048	Leg Straps	7.95

Feel free to email us with any of your beekeeping

Bee Supplies

WE WILL ACCEPT YOUR PRODUCTS IN TRADE FOR SUPPLIES



4 x 7 S. S. Smoker



4 x 7 S.S. Smoker
with shield



4 x 10 S.S. Smoker
with shield



10" Standard Hive Tool



Flat Hive Tool with lifting
hook, designed to pry out
frames with minimal damage



FRAME GRIP TOOL

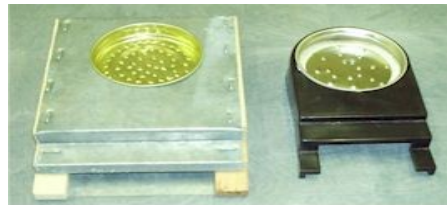


Bee Brush



Bee Escape

A one way device be used with an
inner cover to empty bees from
your honey supers.



Entrance Feeders

Available in wood or plastic.
Just add your quart jar of sugar syrup.



Ultimate
Hive Feeder
and Waterer

Bee and user
friendly in-hive
feeder/waterer
with no-spill,
ez-grip tank.



Hive Top Feeder

Complete and ready for
use. It holds 4 gallons of
syrup and features a
galvanized steel safety
screen to prevent
drowning of bees. This
feeder is constructed of a
heavy duty, single piece
plastic to provide a
no-leak reservoir.



Skunk Guard

Place in front of your hive,
the bees can fly through but
the skunk can not get to the
bees.

\$ 12.95



Maxant Mouse Guard

Place over entrance to prevent -- well duhhh!

Draper's Super Bee Apiaries, Inc.
BS-323

ITEM #	DESCRIPTION	PRICE
BS-051	4 x 7 Stainless Steel Smoker	49.95
BS-050	4 x 7 Stainless Steel w/Shield Smoker	59.95
BS-052	4 x 10 Stainless Steel w/Shield	63.95
BS-120	1 lb. Smoker Fuel	3.95
BS-053	10" standard Hive Tool	10.95
BS-055	Flat style Hive Tool	16.95
BS-056	Frame Grip Tool	12.95
BS-057	Bee Brush	6.95
BS-061	Bee Escape	3.75
BS-066	Maxant Mouse Guard	7.50

ITEM #	DESCRIPTION	PRICE
BS-338	Hive Extender (used with sugar block)	3.95
BS-339	5 lb. Solid Sugar Block	9.95
BS-345	Ultimate Hive Feeder/Waterer	23.95
BS-062	Heavy Duty Wooden Entrance Feeder	9.95
BS-324	Plastic Entrance Feeder	5.95
BS-059	Entrance Feeder Lid	1.65
BS-070	Entrance Feeder Lid with Quart Jar	2.65
BS-063	Division Board Feeder	4.75
BS-312	4 gallon - Hive Top Feeder (no super)	22.95
BS-323	4 gallon - Hive Top Feeder Complete	34.95
BS-090	Skunk Guard	12.95

Bee Supplies

WE WILL ACCEPT YOUR PRODUCTS IN TRADE FOR SUPPLIES



To repair broken top bars



Hive Staples

Can be used to attach the bottom board to the hive body + many other uses.



Frame Spacers

Used in honey supers to keep the frames separated equally.



Metal Rabbet

Protects the frame rests in your supers.



Double Sieve

This adjustable 2 part stainless steel sieve fits onto a 5 gallon bucket.



Cappings Scratcher

For removing cappings on frames before extracting.



Heavy Duty Capping Scratcher

With plastic handle and curved prongs.

This One Will Last a Lifetime!



Plain Uncapping Knife

Unheated knife for the small beekeeper. Believe me you would not want to due very many frames with this.



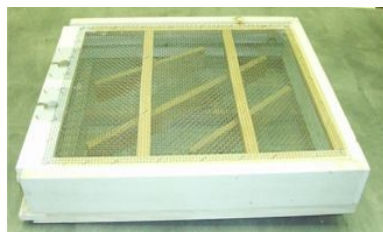
Electric Uncapping Knife

For uncapping all sizes of frames.



Uncapping Plane

Designed to be used with medium depth frames for a very clean and fast uncapping job.



Pollen Trap

This pollen trap can be placed on your bottom board or between the brood chamber and honey supers.



Pollen Trap

This pollen trap replaces your bottom board and is the most efficient trap available.

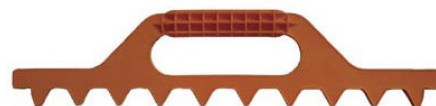
Comes assembled and painted.



Pollen Trap

This pollen trap is placed over the entrance. You can open and close the trap with just a turn of the knob.

Comes assembled and painted.



9 Frame Spacing Tool

A simple tool used to evenly space 9 frames in a 10 frame super.

ITEM #	DESCRIPTION	PRICE	ITEM #	DESCRIPTION	PRICE
BS-067	Frame Saver (to repair broken topbars)	.39	BS-276	Heavy Duty Cappings Scratcher	36.95
BS-076	Hive Staples (1 lb)	6.95	BS-097	Plain Uncapping Knife	39.95
BS-171	9 Frame Spacing Tool	18.95	BS-098	Electric Uncapping Knife	139.00
BS-088	9 Frame Spacers	.75	BS-099	Electric Uncapping Plane	159.00
BS-089	9 Frame Spacers (100 lots)	69.00	BS-093	Pollen Trap (used with your bottom)	39.95
BS-084	L - Shaped Rabbets (10 lots)	2.95	BS-094	Pollen Trap (replaces your bottom)	59.95
BS-085	L - Shaped Rabbets (100 lots)	25.00	BS-092	Pollen Trap (entrance type)	47.95
BS-268	Maxant Double Sieve	69.95	BS-330	Propolis Trap	7.95
BS-096	Cappings Scratcher	11.95			

Feel free to email us with any of your beekeeping questions - sales@draperbee.com

Bee Supplies

WE WILL ACCEPT YOUR PRODUCTS IN TRADE FOR SUPPLIES

Miscellaneous Supplies		
ITEM #	DESCRIPTION	PRICE
BS-202	55 Gallon Drum Gaskets	.99
BS-170	Vacuum Swarm Retriever	425.00
BS-208	Stainless Steel Extractor H (2 frame)	395.00
BS-337	Stainless Steel Extractor H (3 frame)	475.00
BS-209	Stainless Steel Extractor H (4 frame)	495.00
BS-210	Stainless Steel Extractor P (4 frame)	795.00
BS-211	Stainless Steel Extractor P (12 frame)	1495.00
Used extractors sometimes available check our website.		
BS-213	Hedwin Pail Gate	22.95
BS-214	Pail Gate	19.95
BS-215	Barrel Gate	18.95
BS-059	Electric Embedder with Transformer	109.00
BS-058	Form Board	15.95
BS-068	Eyelets (1000 ct bag)	8.50
BS-069	Eyelets (5000 ct bag)	36.00
BS-071	Eyelet Punch	4.95
BS-072	Frame Wire (1 lb)	11.95
BS-073	Frame Wire (5 lbs)	42.00
BS-074	Support Pins (100 ct bag)	9.95
BS-086	T - Shaped Rabbets (10 lots)	3.95
BS-087	T - Shaped Rabbets (100 lots)	33.00
BS-064	Wooden Entrance Reducer	.79
BS-065	Aluminum Entrance Reducer	.95
BS-165	Aluminum Entrance Reducers (10	.85
BS-077	5/8" Nails (1 lb)	5.25
BS-078	3/4" Nails (1 lb)	5.25
BS-079	1" Nails (1 lb)	3.85
BS-080	1 1/4" Nails (1 lb)	4.25
BS-081	# 5 Nails (1 lb)	3.30
BS-082	# 7 Nails (1 lb)	3.95
BS-083	Mixed Nails (1 lb)	5.95
BS-091	Double Screens	19.95

ITEM #	DESCRIPTION	PRICE
BS-334	Section Comb Honey Kit (everything you need to produce section comb honey)	135.00
BS-216	Comb Honey Split Sections	1.75
BS-217	Comb Honey Split Sections (100)	166.00
CM-001	Round Comb Honey Super Complete	109.00
BS-218	Round Comb Frames	5.95
BS-219	Section Rings (200 ct box)	69.95
BS-220	Section Rings (25 ct bag)	7.95
BS-221	Clear Covers (200 ct box)	84.50
BS-222	Clear Covers (25 ct bag)	11.95
BS-223	Opaque Covers (200 ct box)	84.50
BS-224	Opaque Covers (25 ct bag)	11.95
BS-225	4 3/4" Round Comb Super	11.95
BS-226	Round Comb Honey Labels (100 ct)	22.95
Pest & Disease Controls		
BS-228	Tetra-Bee Mix (2 lb shaker can)	16.95
BS-229	Tetra-Bee Mix (10 lb bag)	45.95
BS-326	Terra-Patties (10 pack)	19.95
BS-230	Fumagilin-B (1/2 gram bottle)	28.95
BS-231	Fumagilin-B (2 gram bottle)	58.95
BS-232	Fumagilin-B (9 1/2 gram bottle)	172.95
BS-233	Wax Moth Crystals (1 lb)	7.95
BS-234	Wax Moth Crystals (7 lb gallon)	36.95
BS-140	Varroa Mite Screen	11.95
BS-236	Apistan Strip (for Varroa mite	2.95
BS-237	Apistan Strips (100 ct box)	225.00
BS-166	Apivar Strips (10 pack)	44.95
BS-238	Menthol Crystals (2 oz bag)	6.95
BS-239	Fume Pad (used with Bee-Go)	23.95
BS-240	Bee-Go (pint for removing honey)	22.95
BS-304	Honey Robber (pint for removing honey)	21.95
BS-311	Fischer's Bee Quick (8 oz.)	23.95
BS-241	PI Insecticide (kill diseased hives)	36.00
BS-308	CheckMite Strips (mite treatment)	CALL
BS-327	Bee Pro Patties (pollen substitute) each	5.25
BS-328	Bee Pro Patties (pollen substitute 10 pack)	41.95
BS-342	Honey B Healthy (16 oz. bottle)	34.95

Feel free to call us on our toll free number with any of your beekeeping questions - 800.233.4273



Containers (prices include caps)		
ITEM #	DESCRIPTION	PRICE
BS-246	8 oz round plastic jars (24 pk)	11.95
BS-247	1 lb flat plastic jars (24 pk)	17.95
BS-253	12 oz Honey Bear	.70
BS-248	12 oz Honey Bears (200 ct box)	129.00
BS-306	1 lb. Plastic Bee with bear lid	1.95
BS-271	22 oz. clear Honey Bear	.79
BS-254	2 lb Honey Bear	1.75
BS-272	22 oz. plastic skep w/bear type lid	.95
BS-273	Round plastic quart w/handle	1.30
BS-250	5 lb plastic round jars (6 pk)	15.95
BS-252	Plastic Gallon Jugs (4 pk)	8.40
BS-160	Pail <u>Lid Off</u> tool	11.95
BS-255	2 Gallon plastic feeder pail	9.95
BS-256	5 Gallon Round plastic pail	9.95
BS-257	5 Gallon Square plastic pail	9.95

Containers (prices include caps)		
ITEM #	DESCRIPTION	PRICE
BS-269	1 oz. Glass Jar	1.25
BS-259	6 oz Salt & Pepper glass mug (24 pk)	31.95
BS-260	8 oz Classic style glass (24 pk)	23.95
BS-261	1 lb Classic style glass (24 pk)	22.95
BS-322	1 lb. Round Chunk glass (12 pk)	10.95
BS-262	Pint Round style glass (12 pk)	11.95
BS-277	Pint Golden Harvest Handled (24 pk)	37.95
BS-264	2 lb Classic style glass (12 pk)	16.95
BS-249	2 1/2 lb Chunk glass (12 pk)	26.95
BS-265	Quart Round style glass (12 pk)	13.95
BS-267	5 lb Round style glass (6 pk)	20.95
BS-274	Plastic Cut Comb Boxes	1.45
BS-275	Case Plastic Cut Comb Boxes (100 ct.)	129.95

We can now custom print labels for your honey jars. See page 24 and visit our website for more label choices.

Custom Printed Labels

We can custom print labels for your honey jars and/or non-honey containers. We have the labels, as shown, available or you can send us your labels to be printed. The biggest bonuses to having us print your labels are: High quality ink that will not smudge like hand stamped ink, text can be printed in different fonts with your name, address, color and/or type of honey, weight, logo, and we can even print a U.P.C. We can even bottle the honey of your choice in any of our in stock containers and label it with custom printed labels for wedding favors, gifts (holidays, birthdays, office, etc.) or other special occasions. To get your labels done all you have to do is call or email me with the information that you want printed on your labels. I prefer that you email the information, it then is less likely that I will make a mistake on the printing and it gives me a return email address to send you a sample of what your finished labels will look like and for approval before I print them. You can make as many changes as needed until it is exactly what you want. Upon approval I will print and ship your labels usually within 24 hours. I personally do all of the printing and if you have any questions feel free to email me or call me on our toll free number (800-233-4273). Thank You - Royal W. Draper

All of our labels come in rolls of 250; but you can order less than whole rolls.

Cost of Printed Labels:

Less than 250 labels - .46 each

250 or more printing \$20.00 a roll.

There are many more styles of labels available, but because of limitations in space and cost of printing in this catalog we decided not to list all of them here. However, you can view our entire stock of labels on our website. WWW.DRAPERBEE.COM



ITEM #	LABEL DESCRIPTION	PRICE
LA-001	This label fits best on round containers. Measures 4" x 2"	24.95
LA-002	This label fits best on round containers. Measures 4" x 2"	29.95
LA-003	This label fits best on round containers. Measures 3 ½" x 2 1/8"	17.95
LA-004a	This label was designed to fit 8 oz., 1 lb and larger jars . Measures 1 ¾" x 3"	15.95
LA-004b	This label was designed to fit 2 lb. and 5 lb jars. Measures 2 5/8" x 4 ½"	26.95
LA-005a	This label was designed to fit 8 oz., 1 lb and larger jars . Measures 1 ¾" x 3"	20.95
LA-005b	This label was designed to fit 2 lb. and 5 lb jars. Measures 2 5/8" x 4 ½"	39.95
LA-006a	This label was designed to fit 8 oz., 1 lb and larger jars . Measures 1 ¾" x 3"	20.95
LA-006b	This label was designed to fit 2 lb. and 5 lb jars. Measures 2 5/8" x 4 ½"	26.95
LA-007	We have 1 size of this design to fit: 1 lb. and larger jars. Measures 2" x 2½"	34.95
LA-008	We have 1 size of this design to fit: 1 lb. and larger jars. Measures 2" x 2½"	34.95
LA-009	We have 1 size of this design to fit: 1 lb. and larger jars. Measures 2" x 2½"	34.95
LA-010a	This label was designed to fit 8 oz and larger jars. Measures 2" x 3"	34.95
LA-010b	This label was designed to fit 1 lb. and larger jars. Measures 2 5/8" x 4"	37.95
LA-011	We have 1 size of this design to fit: 1 lb. and larger jars. Measures 2 3/16" x 2 3/8"	11.95
LA-012a	This label was designed to fit 12 oz. Bears Measures 1¼" x 1¾"	25.95
LA-012b	This label was designed to fit 22 oz. Bears Measures 1 ¾" x 2 3/8"	31.95
LA-013	We had this label custom made to fit on the 1 lb. Plastic Bee Measures 11/8" x 1 ¾"	14.95
LA-014	We have 1 size of this design to fit: 4 lb. and 5 lb. jars. Measures 3 ¼" x 3 ¾"	16.95
LA-015	We have 1 size of this design to fit: 1 lb. and larger jars. Measures 2" x 3 ¼"	14.95
LA-016	This label was designed to fit 12 oz. Bears Measures 1 3/16" x 1 9/16"	14.95
LA-017	We have 1 size of this design to fit: 1 lb. and larger jars. Measures 1 ¾" x 2 ¾"	14.95
LA-018	We have 1 size of this design to fit: 2 lb. and larger jars. Measures 3" x 3"	19.95
LA-019a	This label was designed to fit 8 oz., 1 lb and larger jars. Measures 1 ¾" x 3"	14.95
LA-019b	This label was designed to fit 2 lb. and 5 lb jars. Measures 2 5/8" x 4 ½"	16.95
LA-020a	This label was designed to fit 8 oz., 1 lb and larger jars. Measures 1 ¾" x 3"	14.95
LA-020b	This label was designed to fit 2 lb. and 5 lb jars. Measures 2 5/8" x 4 ½"	16.95
LA-021a	This label was designed to fit 8 oz., 1 lb and larger jars. Measures 1 ¾" x 3"	19.95
LA-021c	This label was designed to fit 2 lb. and 5 lb jars. Measures 2 3/16" x 3 3/4"	18.95
LA-022a	This label was designed to fit 8 oz., 1 lb and larger jars. Measures 1 ¾" x 3"	19.95
LA-022b	This label was designed to fit 2 lb. and 5 lb jars. Measures 2 5/8" x 4 ½"	18.95
LA-023a	This label was designed to fit 8 oz., 1 lb and larger jars. Measures 1 ¾" x 3"	19.95
LA-023b	This label was designed to fit 2 lb. and 5 lb jars. Measures 2 5/8" x 4 ½"	16.95
LA-024a	This label was designed to fit 8 oz., 1 lb and larger jars. Measures 1 ¾" x 3"	14.95
LA-024b	This label was designed to fit 2 lb. and 5 lb jars. Measures 2 5/8" x 4 ½"	16.95
LA-025	This label fits best on round containers. Measures 3 ¼" x 2"	16.95
LA-026	This label fits best on round containers. Measures 2" x 4"	16.95
LA-034	This label fits best on the panel bears. Measures 1 1/2" x 1 3/4"	18.95
We have many more label styles available on our website - www.draperbee.com		

THE ULTIMATE OBSERVATION HIVES !!

The proud owner of any of this units, will receive an instant education.

These hives are designed for use in your living room, den, or wherever you choose. The wood is beautifully finished furniture quality. All of our observation hives are made with safety glass. They are 45" tall, 30" wide, and turn 360 degrees for maximum viewing pleasure. The base, which remains stationary, has a tunnel attached which goes to the outside of the bee's entrance and exit. To work the bees, a sliding trap door closes the entrance; then the whole top part of the hive is lifted off and carried outside for manipulation.



Deluxe Cherry



Standard Oak, Pine, Basswood



Deluxe Maple



Bee Venom Therapy



The base unit with entrance/exit



Each Hive has a built in sugar syrup feeder.



2 Frame Portable, Observation Hive Available in Mahogany or Oak.

ITEM #	DESCRIPTION	PRICE
OB-009	2 Frame Portable, Observation Hive	595.00
OB-001	Pine Observation Hive	595.00
OB-002	Standard Oak Observation Hive	595.00
OB-003	Standard Cherry Observation Hive	595.00
OB-004	Bee Venom Therapy Observation Hive	995.00
OB-005	Deluxe Oak Observation Hive	895.00
OB-006	Deluxe Cherry Observation Hive	895.00
OB-008	Deluxe Maple Observation Hive	895.00
OB-010	Deluxe Mahogany Observation Hive	1395.00



Deluxe Mahogany Observation Hive

Observation Hive Instructions

Instructions are based on having the ideal conditions available for installation. This does not mean that you cannot have an observation hive if you cannot meet all of these specs.

A southeast entrance is preferred. If you are a business and have customers walking by the hive entrance, then you can build a wooden fence (like a swimming pool fence) or have a hedge fence. The fence or hedge should be at least a couple of feet higher than the observation hive entrance and constructed in a U shaped manner four to six feet back from the wall. A locked gate into this area is desirable.

Inside the building, the observation hive should be installed as close to the wall as possible. There is a rectangular hollow shoot made for the bees to enter and exit. A hole in the wall that matches the size of the shoot is best. The shoot should be placed in the wall. All cracks or spaces should be filled with plastic wood or similar substance. The hive must be able to rotate 360 degrees freely. Sunlight should not hit the glass directly.

For manipulation, a five frame empty nucleus box (1/2 a hive) should be kept available by the outside entrance. It's best to have two people when taking the observation hive off its base. First close the sliding door - have a damp paper towel wadded up to fit into the access pipe. When the hive is lifted off, put the paper towel in the pipe - this keeps any field bees out of your room. The use of the paper towel is not necessary on our newest observation hives, we have added a second sliding shut off on top of the base. Take the hive around by the outside entrance - open - if needed place the frames of bees in the nuc box. If you need to clean the hive, use a razor blade scraper and hot water only. Frames of bees can then be placed right back into the observation hive. Bees that have taken flight will be in the entrance shoot and will return to the hive as soon as you remove the paper towel and open the sliding door.

**For answers to any other questions - please call Drapers.
Thank you for buying the number one observation hive in the
world !!**

Books

Cooking with Honey

To substitute honey for sugar in recipes, start by substituting up to half of the sugar called for. With a little experimentation, honey can replace all the sugar in some recipes. When baking with honey, remember the following:

- ◆ Reduce any liquid called for by 1/4 cup for each cup of honey used.
- ◆ Add 1/2 teaspoon baking soda for each cup of honey used.
- ◆ Reduce oven temperature by 25° F to prevent over-browning.

Because of its high fructose content, honey has a higher sweetening power than sugar. This means you can use less honey than sugar to achieve the desired sweetness. When measuring honey, keep in mind that one 12-ounce jar of honey equals a standard measuring cup. When measuring honey, coat the measuring cup with non-stick cooking spray or vegetable oil before adding the honey. The honey will slide right out.

Storing Honey

To retain honey's wonderfully luxuriant texture, always store it at room temperature; never in the refrigerator. If your honey becomes cloudy, don't worry. It's just crystallization, a natural process. Place your honey jar in warm water until the crystals disappear. If you're in a hurry, place it in a microwave-safe container and heat it in the microwave on HIGH for 2-3 minutes, stirring every 30 seconds. Remember, never boil or scorch honey.

Cookbooks		
Item #	Description	Price each
BK-062	Old Favorite Honey Recipes (138 pages)	10.00
BK-063	Honey, I'm Homemade (163 pages)	21.95
BK-003	Putting it up with Honey Canning Guide (207 pages)	19.95
BK-022	Making Mead (Honey Wine) (127 pages)	16.95
BK-028	Nature's Golden Treasure Cookbook (198 pages)	12.95
BK-037	Honey A Connoisseur's Guide With Recipes (136 pages)	14.95
Beehive Product Books		
BK-001	The Miracle of Honey - Practical Tips for Health, Home & Beauty (134 pages)	12.95
BK-059	The Honey Revolution (71 pages)	6.95
BK-054	The Hibernation Diet (150 pages) *uses honey, wholesome food and resistance exercise.*	14.95
BK-055	Kendal the Baker Bee (142 pages) A Tale about Heroes and Good Deeds	11.95
BK-042	From Flower to Honey (24 pages) (educational)	5.95
BK-023	Honey The Gourmet Medicine (105 pages) Summarizes the medicinal value of honey.	9.95
BK-011	Hive Products: Pollen, Propolis and Royal Jelly (5 pages)	2.25
BK-040	Bee Pollen, Royal Jelly, Propolis and Honey *valuable information* (58 pages)	4.95
BK-041	Health and Healing with Bee Products *Boost health & prevent disease* (60 pages)	11.95
BK-019	The Royal Jelly Miracle (21 pages)	2.25
BK-007	Folk Medicine (192 pages)	6.99
BK-035	The Honeybee and the Robber (moving picture book)	21.95
BK058	The Backyard Vintner (wine making) (174 pages)	19.99
BK-053	The Candlemaker's companion (199 pages)	27.95
BK-014	Super Formulas, Arts and Crafts (114 pages)	15.95
Bee Venom Therapy Books		
BK-006	How Well are you Willing to Bee? (80 pages)	25.95
BK-060	Health and the Honeybee (92 pages)	22.95
Beekeeping Books		
BK-061	Beekeeping for Dummies (358 pages)	29.95
BK-050	The Backyard Beekeeper (167 pages)	24.95
BK-026	The Hive and the Honey Bee (hard cover)	69.95
BK-057	Backyard Beekeeper's Honey Handbook (168 pages)	24.95
BK-024	First Lessons in Beekeeping (166 pages)	14.95
BK-025	Living With Killer Bees (144 pages)	19.95
BK-033	Beekeeping Basics (98 pages)	14.95
BK-064	Bees & Beekeeping (255 pages)	14.95

Draper's Beginners Kit

We are now offering a complete Beginners Kit without the bees.

The kit includes everything needed to get started in beekeeping.

We start taking orders for package bees sometime in November; the bees will then be shipped the following spring. Check our website for updates starting in November for more information about ordering bees to fill your new hive. Happy Beekeeping!

Our Kit Includes The Following Items:

(note: some items need assembly)

- 1 - Telescoping Cover (plastic)
- 1 - Inner Cover
- 1 - Commercial Hive Body
- 10 - Commercial 9 1/8 Frames
- 10 - Sheets 8 1/2" Foundation
- 1 - Bottom Board
- 1 - Hive Stand
- 1 - Entrance Feeder
- 1 - lb. mixed nails
- 1 - Zipper Veil Jacket
- 1 - Pair of Canvas Gloves
- 1 - Stainless Steel Smoker
- 1 - Hive Tool
- 1 - Beginners Book



Item # BEE-13 - Your Cost = \$ 285.00 + shipping and handling.

Draper's Super Bee Apiaries, Inc.
Millerton, PA 16936
phone: 800-233-4273
e-mail: sales@draperbee.com
website: www.draperbee.com

2019

Draper's Super Bee Apiaries, Inc.

32 Avonlea Lane

Millerton, PA 16936-9131

Phone: 800-233-4273

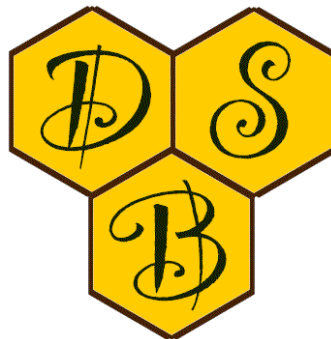
Fax: 570-537-2727

Visit our website: www.draperbee.com

Email us: sales@draperbee.com

Like us on Facebook

www.facebook.com/draperbee



Have a Great Season!

Content © 2019 Draper's Super Bee Apiaries, Inc. All Rights Reserved.
Logos and Trade names are registered trademarks of their respective companies.